



## 36' x 60' Triplewide



### Standard Features

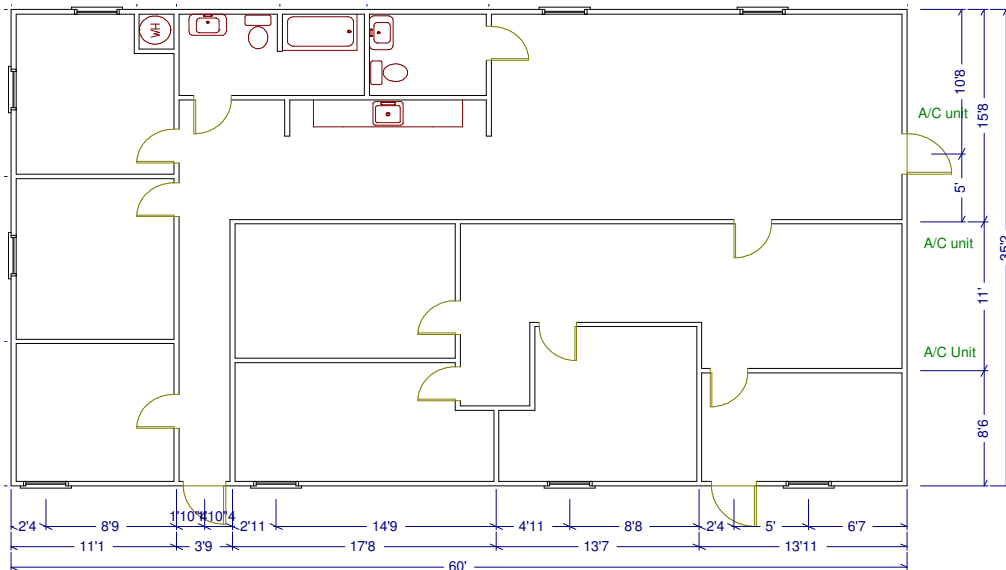
- Year Built: 1993, TN coded
- BARD Wall mounted HVAC (Heat/Cool)
- 120/240 volt, single phase panel
- Medical office use
- Aluminum Exterior, Galvanized Roof
- Vinyl Covered Gypsum and Carpet
- 9 Offices
- Two (2) Handicap Restrooms

### Additional Information

- Date Available: Currently in Inventory
- Location: Olive Branch, MS (Memphis area)
- Call branch for pricing and delivery/setup

Note: Availability NOT guaranteed. Please call ahead to verify that units are still in stock.

Call **EG Capobianco**  
for more information on this  
and other available units:  
**662-890-7260**



Check out other Limited Time Special Offers for Purchase or Lease by visiting [www.ModSpace.com/specials](http://www.ModSpace.com/specials)